

About Lohman

Lohman Helicopter LLC is a certified Small Business Enterprise (SBE) based in Lewiston Idaho. Since 2007, we have provided expert Civil Excavation and Utility Helicopter services focused on Wildland Firefighting, Powerline Maintenance, Hurricane Response & Recovery, Road Construction, and Air Carrier operations throughout the contiguous United States, Alaska, Canada, and Mexico.

We are committed to embracing our extremely focused, hands-on approach to leadership in safely and efficiently when completing each mission.

Company Snapshot

SAMS Unique Entity ID
M73NSDRM2BE5

CAGE Code
5A3K5



NAICS Codes
115310, 237310, 481211, 488999,
561210, 561730, 561990, 624230

Bonding Capability
\$25MM Single Project
\$25MM Aggregate

DUNS
014225567

Contact Us

Morgan Lohman, President
Email: morgan@lohmanhelicopter.com

Headquarters:
406 Burrell Ave. Lewiston ID. 83501
(208) 743-5411

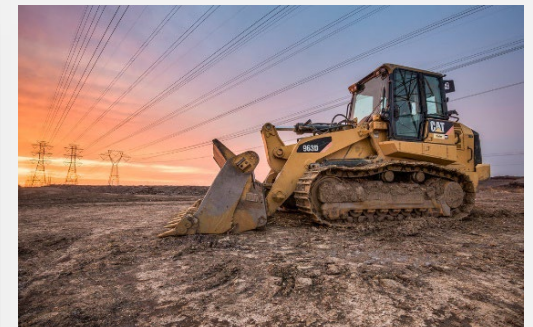
Website
www.lohmanhelicopter.com

Company Overview

Lohman Helicopter employs a full staff of FAA certified, U.S. Forestry carded, utility pilots and heavy equipment operators to fulfill its full schedule of wildland firefighting Helitack missions, powerline construction, precision long line lift operations, disaster recovery/response & fish and wildlife survey support.

Our expert pilots, assisted by specialized ground crews, have decades of experience operating in the most demanding of settings. From fighting fire in the Brooks Range of Alaska to setting 200' powerline structures in the remote deserts of California

The implementation and use of an Aviation Safety Management System has increased Lohman's ability to identify hazards and reduce risk. As a result, the years of experience from Lohman pilots coupled with an effective SMS program has provided Lohman's customers with increased ability to conduct highly technical jobs with higher safety margins.



Current and Past Performance: Federal and Private Sector

Client	Contract Amount	Description
Civil Excavation & Disaster Response Service		
Los Angeles Department of Water and Power	\$5,000,000.00	Clear, Grub and Grade approximately 210 locations for high-voltage towers. Approximately 500 acres of land. Maintain and improve approximately 50 miles of two-track right-of-way roads that access the powerline, develop large sites of land for construction yards. Grading, dozing, cut and fill, and aggregate spreading of 12,000 tons of rock.
Oregon Department of Forestry	\$1,000,000.00	Wildland Firefighting. Post-fire recovery/rehabilitation (various bulldozers, water trucks, and excavators)
U.S. Forest Service	\$40,000.00	Decommission and Scarify Roads, install gates and traffic barriers on USFS roads.
U.S. Department of Interior/U.S. Forest Service	\$48,000.00	Install large USDA/USFS signs, auger holes, reclaim area, contour slope and road shoulders.
City of Palouse, WA.	\$250,000.00	Install the city water main line, tie into existing line. Included complex installation of main line under a bridge crossing the Palouse River.
Utility Helicopter		
Oregon Department of Forestry	\$1,200,000.00	Aerial Firefighting/Suppression Efforts
Alaska Department of Natural Resources	\$750,000.00	Aerial Firefighting/Suppression Efforts
U.S. Department of Agriculture	\$450,000.00	Aerial Firefighting/Suppression Efforts
Idaho Power Company	\$220,000.00	Powerline construction with helicopters. Set power poles, install conductor, fly cargo, and line workers
Inland Power & Light Company	\$100,000.00	Powerline construction with helicopters. Set power poles, install conductor, fly cargo, and line workers
U.S. Department of Agriculture	\$1,400,000.00	Redding Falcon Law Enforcement Operations, Short Haul

Core Competencies

- Utility Helicopter Services**
 - FAR 91
 - Animal and Land Survey Services
 - FAR 133 Utility Helicopter Operations
 - Human External Cargo (HEC)
 - Hurricane Response & Recovery
 - Longline Operations
 - Powerline Maintenance & Construction
 - Short Haul Operations
 - Wildland Firefighting
 - FAR 135 Helicopter Operations
 - Passenger and Cargo Services
 - FAR 137 Helicopter Operations
 - Agricultural Spraying
- Civil Excavation & Disaster Response Services**
 - Drilling, Grading, Road Maint., Underground Utilities, and Trenching
 - Hurricane Response & Recovery
 - Powerline ROW Construction, Laydown Yard Construction
 - Site Security, Traffic Control
 - Spider Excavation Operations
 - Wildland Fire Fighting, Reclamation, Rehabilitation & Recovery

Differentiators

IS-BAO & DOD Certified Aviation Safety Professionals:

Lohman Helicopter is an International Standard for Business Aircraft Operations (IS-BAO) Stage II and Department of Defense Commercial Airlift Review Board (CARB) approved operation. Only those displaying an exceptional commitment to safety within the Operations and Maintenance Departments are granted this authorization.

Fully Staffed, State of the Art Equipped, Expert Experience:

Pilots, mechanics, equipment operators, and support staff have thousands of hours flown, driven, and operated completing a vast range of missions from Human External Cargo powerline operations to replacing city water mains with little to no outages. Our employees include lifelong pilots, military veterans, and dedicated city & state government servants.

Certifications and Licenses

- Certified Small Business Enterprise
- SAMS Registered
- FAA – 133, 135, 137 Certified
- HAZMAT Will Carry Approved
- Safety Management System Approved
- IS-BAO/DOD CARB Approved
- OSHA 30 Construction Certified
- DOT CDL Class "A" Operators

Target Agencies

- Department of Defense
- U.S. Department of the Interior/Agriculture/BLM
- U.S. Army Corps of Engineers
- FEMA
- State Dept of Natural Resources